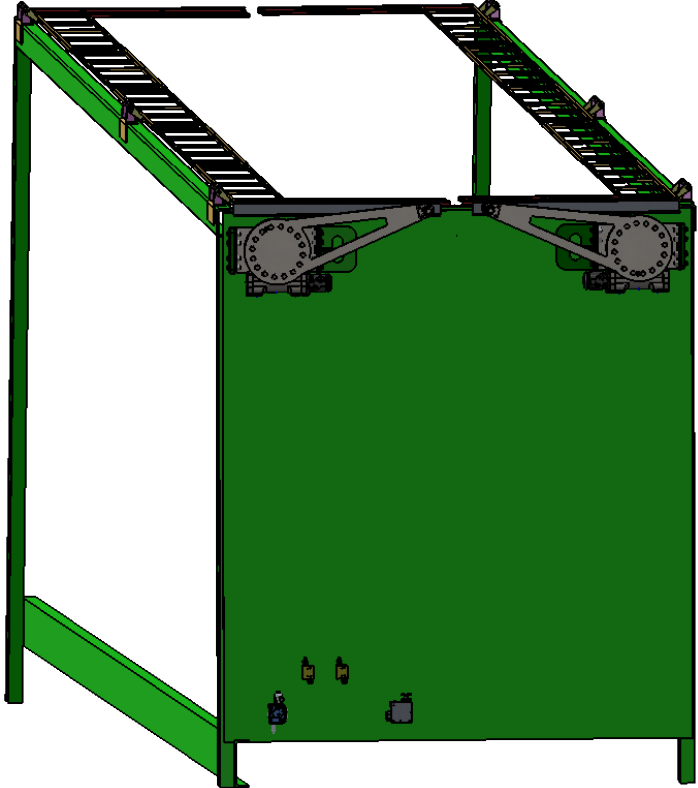
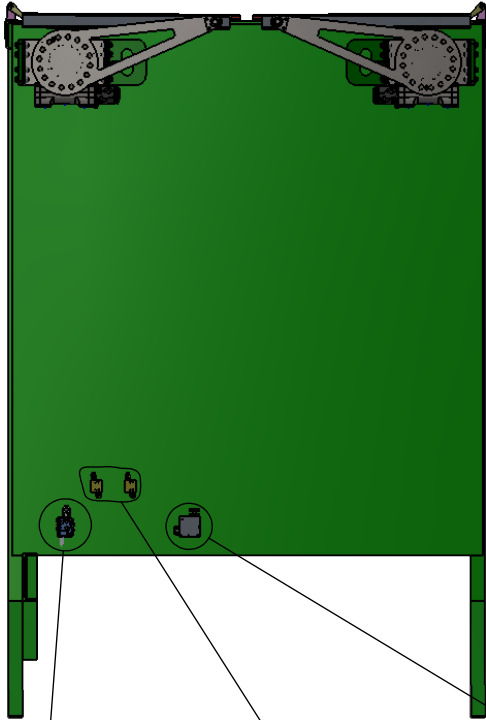


NC B 9 F9J	8 9G7 F-ĐHC B	85H9	5DDFC J 98



R930004233
3/4" BSP PRESSURE
COMPENSATED FLOW
CONTROL VALVE 150 LPM

2-OFF
R930001421
SEQUENCE VALVES

MB3/1S-MG-3/18L/G-3
MONOBLOCK VALVE
1 SPOOL 3/8 BSP

ÜÖT UXÖÄSSÖWÜÜ
ÖE ÖÄUP ÖEU ÖÖÖÖU

DFC DF-9-6FM5B87CB: -89BH5@

H: 9 B: CFA 5HC B 7 C BH5 B 98 B H: G
8F5K B: 6H: 9GC @DFC D9F HVC:
7 / 7 < MBF51 @7 G @A #98 " 5BM
F9DFC 81 7 HC B B D5FHCF 5G5 K < C @
K H: C I H: 9K F #98 D9FA 6GC B' C:
7 / 7 < MBF51 @7 G @A #98 6DFC < 6#98 "

I B @GGC H: 9FK 69 GD97 ≠ 98.

8-A 9BGC BG5F9-B A A
HC @F5B7 9G
5B: I @F: A 57 < ± \$% " "
BC 897 A 5 @D @5 7 9 ± \$"
C B 9 8 97 A 5 @D @5 7 9 ± \$"
HK C D @5 7 9 8 97 A 5 @ " ± \$%
H: F 99 D @5 7 9 8 97 A 5 @ ± \$"

B H F DF 9H: 9C A 9FF 7
HC @F5B7 B: D9F:
A 5 H F 5 @

N8 Q F: 57 9: -B G: I B @GG
C H: 9FK 69 G F H 98

8C B CHG 7 5 @ 8F5K B:

B5A 9 85H9

8F5K B

7 < 97 ? 98

9B: 5DDF"

A: 5DDF"

E "5"

7 C A A 9BHG



7 / 7 < MBF51 @ 7 G @ B

H @.

SDSS.SLEW DRIVE SHEETING
SYSTEM (CLOSED)

G A 9

5

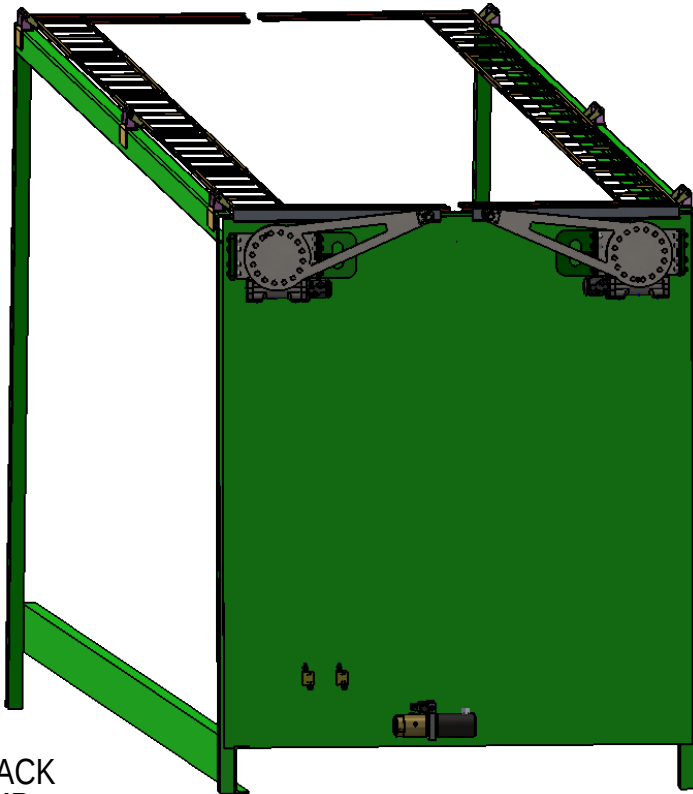
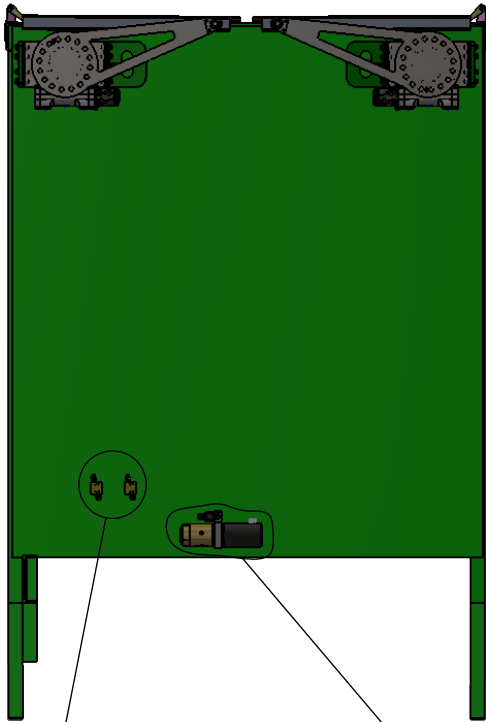
G 7 5 @. % & \$ \$ 9 ÷ < H'

8K ; " " BC "

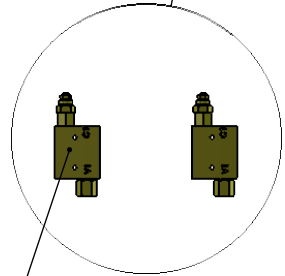
F9J

G < 99 H % C : '-

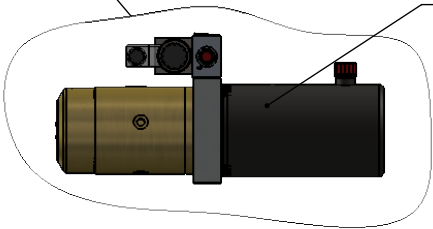
NC B 9 F9J	8 9G7 F-ĐHC B	85H9	5DDFC J 98



24V POWER PACK WITH 8CC PUMP




2-OFF R930001421 SEQUENCE VALVE



ÜÖT UXÖÄSSÄWÜÜÜ
ÖE ÖÄUP ÖEU ÖÖÖÖÜ

DFC DF-9-6FM5B87CB: 89BH5@
H:9 B: CFA 5HC B 7C BH5 B 98 B H:G
8F5K B: 6H:9GC @DFC D9F HMC:
7 / 7 <MBF51 @7 G@A #98" 5BM
F9DFC 81 7 HC B B D5FHCF 5G5 K <C @
K H:C I H:K 9K F #98 D9FA 6GC B'C:
7 / 7 <MBF51 @7 G@A #98 6DFC <6#98"

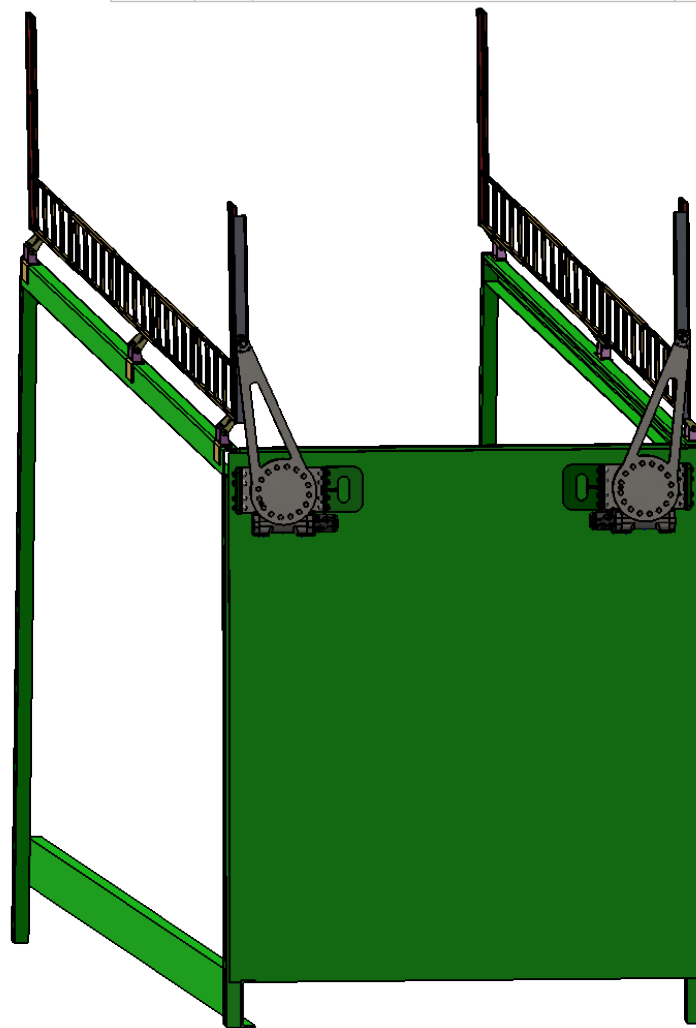
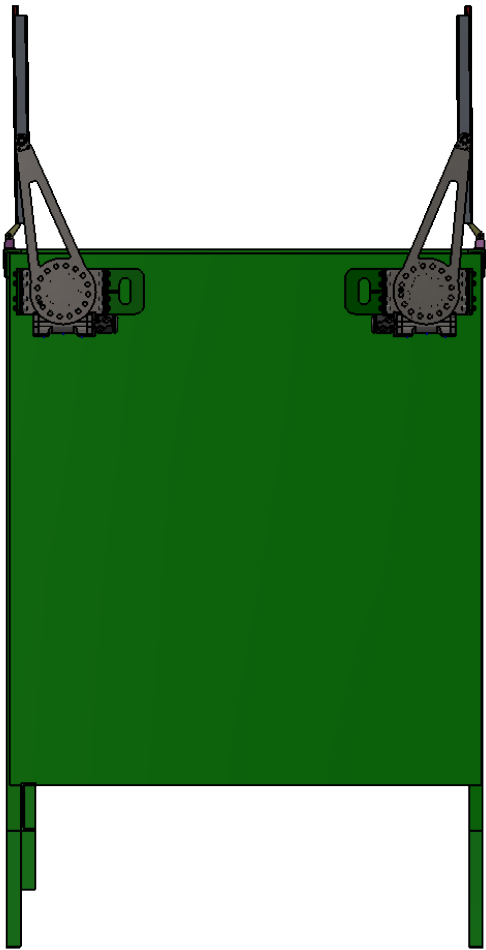
I B @GGC H: 9FK 69 CD97 ≠ 98.		B5A 9	85H9
8-A 9BG C BG5F9-B A A HC @F5B7 9G	8F5K B	8F	% (#%\$#%
5B: 1 @F: A 57 < ± \$%"" BC 897 A 5@D@5 79 ± \$") C B9897 A 5@D@5 79 ± \$"& H C D@5 79897 A 5@"" ± \$% H: F99D@5 79897 A 5@ ± \$%)	7 < 97 ?98		
	9B: 5DDF"		
	A: 5DDF"		
	E "5"		
B H@DF 9H: 9C A 9FF 7 HC @F5B7 B: D9F.	7 C A A 9BHG		
A 5H@F 5@			
N8	Q F: 579: -B G< I B @GG C H: 9FK 69 G F H8		
8C B CHG75 @98F5K B:			

 7 / 7 <MBF51 @7 G@B

H@D.
SDSS.SLEW DRIVE SHEETING SYSTEM (CLOSED)c/w POWER PACK

G#9	8K ; ""BC"	F9J
5		
G7 5 @. %&\$X 9 ÷ <H'	G< 99H&C: '-	


NC B 9 F 9J	8 9G7 F-ĐHC B	85H9	5DDFC J 98



ÙÒT UXÒÀÈŠŠÒWÜÜÙ
 ÒÈ-ÒÁÛPÒÈÛÀÒÓÓÓÙ

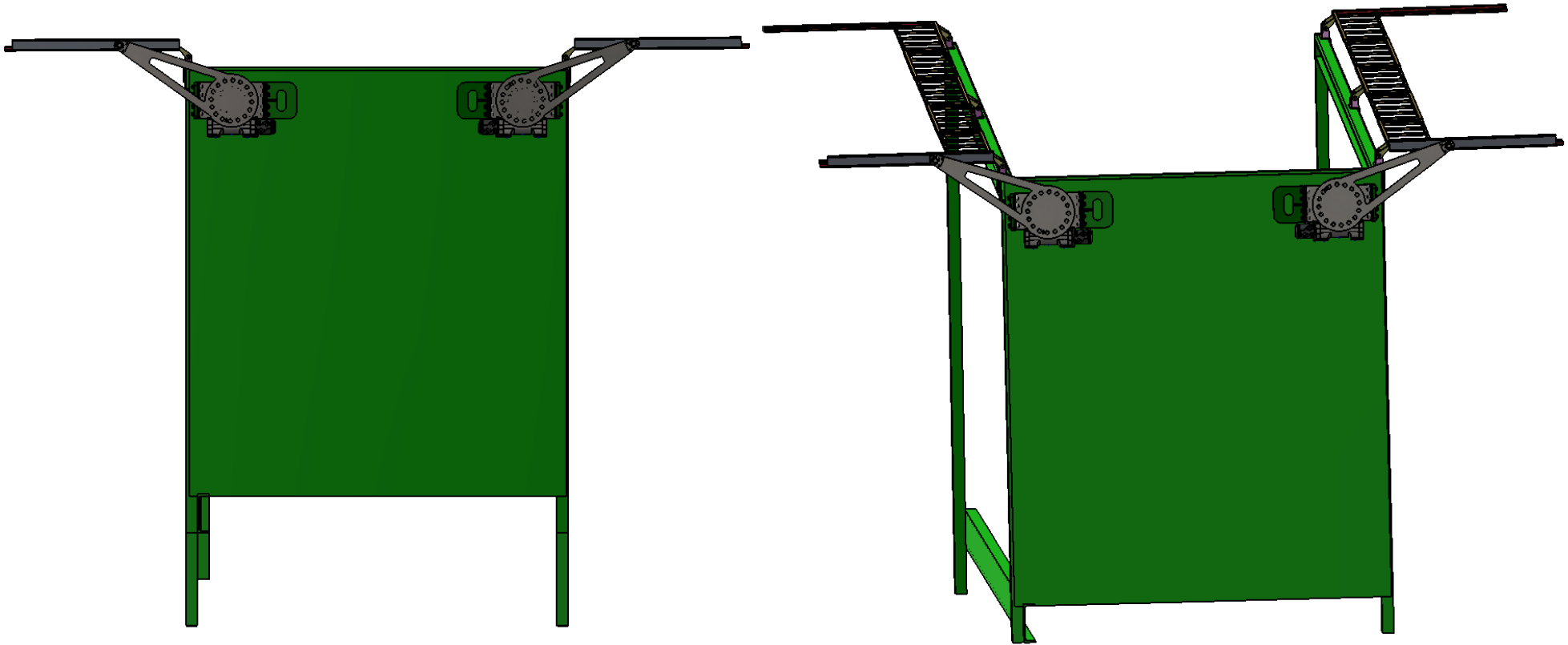
DFC DF-9-6FM5B87CB: -89BH5@
 H:9 B: CFA 5HC B 7 C BH5 B 98 B H:G
 8F5K B: 6H:9GC @DFC D9F HMC:
 7 / 7 <MBF51 @7 G@A #98" 5BM
 F9DFC 81 7 HC B B D5FHCF 5G5 K <C @
 K H:C I H:K 9 F H9B D9FA 6GC B'C:
 7 / 7 <MBF51 @7 G@A #98 6DFC <6+98"

I B @GGC H: 9FK 69 CD97 ÷ 98.	B5A 9	85H9
8-A 9BGC BG5F9-B A A HC @F5B7 9G	8F5K B	8F %(#%#%#
5B: I @5F: A 57 < ± \$%" BC 897 A 5@D@579 ± \$") CB9897 A 5@D@579 ± \$"& HK C D@579897 A 5@' ± \$% H:F99D@579897 A 5@ ± \$%)	7 <97 ?98	
B H9F DF 9H: 9CA 9FF 7 HC @F5B7 B: D9F.	9B: 5DDF"	
A 5H9F 5@	A: 5DDF"	
N8 Q F: 579: -B G< I B @GG C H: 9FK 69 G F H98	E "5"	
8C B CHG75 @98F5K B:	7 C A A 9BHG	

 7 / 7 <MBF51 @7 G@B
 H@.
SDSS.SLEW DRIVE SHEETING SYSTEM (VERTICAL)

G#9	8K ; ""BC "	F9J
5		
G7 5 @. %&\$ \$ 9 ÷ <H'	G<99H' 'C: '-	

NC B 9 F 9 J	8 9 G 7 F - D H C B	8 5 H 9	5 D D F C J 9 8

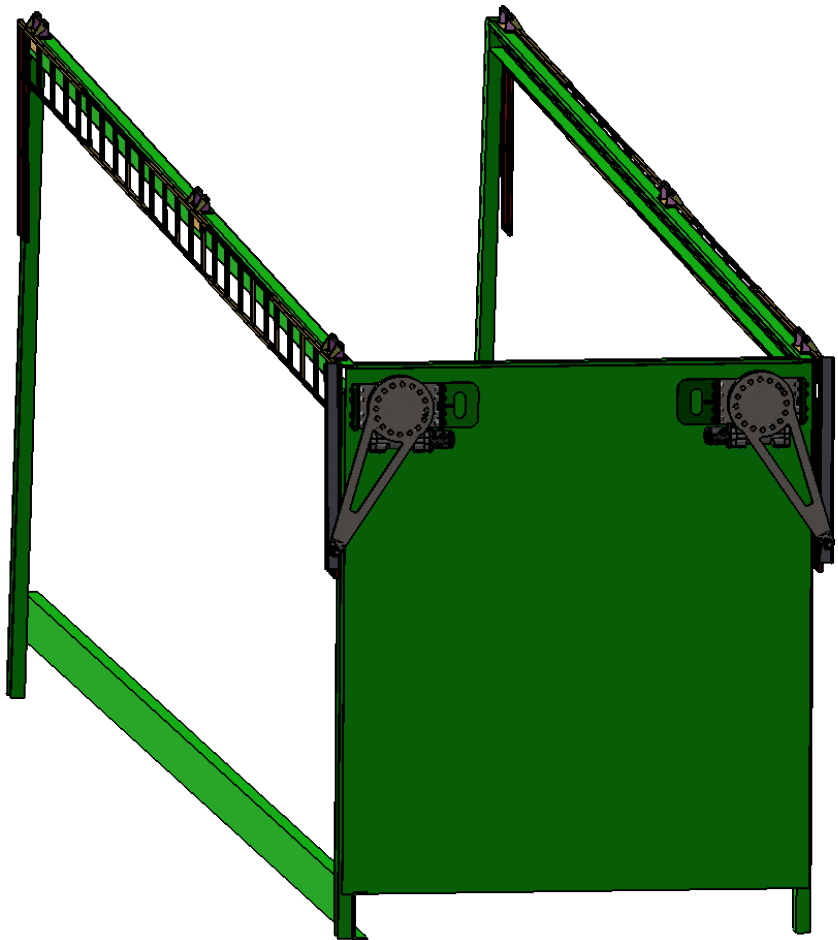
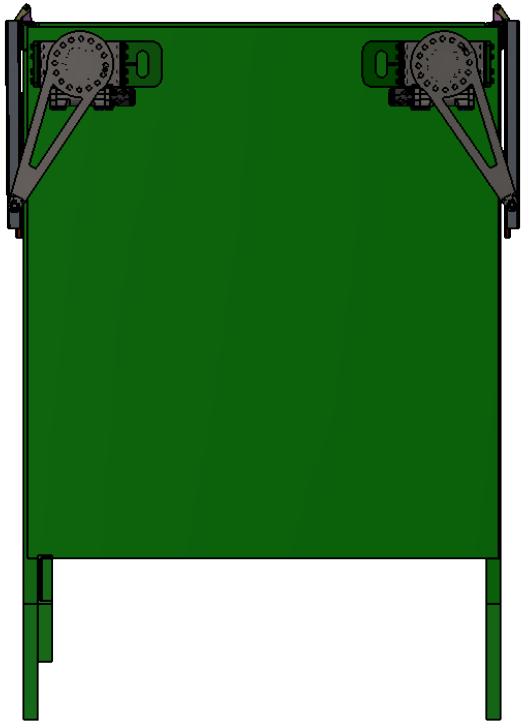


ÜÖT UXÖAÖSSÖWÜÜ
ÖE ÖÄP ÖEU ÖÖÖÖ

DFC DF - 5 6 F M 5 B 8 7 C B : 8 9 B H 5 @
 H : 9 B : C F A 5 H C B 7 C B H 5 B 9 8 B H : G
 8 F 5 K B : G H : 9 G C @ D F C D 9 F H M C :
 7 / 7 < M B F 5 1 @ 7 G @ A # 9 8 " 5 B M
 F 9 D F C 8 1 7 H C B B D 5 F H C F 5 G 5 K < C @
 K H : C 1 H H : 9 K F H 9 8 D 9 F A G G C B C :
 7 / 7 < M B F 5 1 @ 7 G @ A # 9 8 G D F C < 6 # 9 8 "

I B @ G G C H : 9 F K - 6 9 C D 9 7 - 9 8 .		B 5 A 9	8 5 H 9	 7 / 7 < M B F 5 1 @ 7 G @ B
8 A 9 B G C B G 5 F 9 B A A H C @ F 5 B 7 9 G 5 B : I @ 5 F : A 5 7 < ± \$ % " " " B C 8 9 7 A 5 @ D @ 5 7 9 ± \$ ") C B 9 8 9 7 A 5 @ D @ 5 7 9 ± \$ %) H K C D @ 5 7 9 8 9 7 A 5 @ " " ± \$ % H : F 9 9 D @ 5 7 9 8 9 7 A 5 @ ± \$ \$)	8 F 5 K B	8 F	% (# % \$ # % "	
	7 < 9 7 7 9 8			H # @ .
	9 B : 5 D D F "			SDSS.SLEW DRIVE SHEETING SYSTEM (HORIZONTAL)
	A : : 5 D D F "			
	E " 5 "			G A 9 8 K ; " " B C " F 9 J
	H H F D F 9 H : 9 C A 9 F F 7 H C @ F 5 B 7 B : D 9 F . A 5 H F 5 @	7 C A A 9 B H G		5
N 8	Q F : 5 7 9 : B G < I B @ G G C H : 9 F I K - 6 9 G 5 H 8			G 7 5 @ . % & \$ \$ 9 7 < H ' G < 9 9 H (' C : ' -
8 C B C H G 7 5 @ 8 F 5 K B :				

NC B 9 F 9 J	8 9 G 7 F ð H C B	8 5 H 9	5 D D F C J 9 8



ÜÖT UXÖÄÖŠŠÖWÜÜÜ
ÖE ÖÄUP ÖEJU ÖÖÖÖÜ

DFC DF 9 6 F M 5 B 8 7 C B : 8 9 B H 5 @

H: 9 B: C F A 5 H C B 7 C B H 5 B 9 B B H: G
8 F 5 K B: G H: 9 G C @ D F C D 9 F H M C:
7 / 7 < M B F 5 1 @ 7 G @ A # 9 8 " 5 B M
F 9 D F C 8 1 7 H C B B D 5 F H C F 5 G 5 K < C @
K H: C I H H: 9 K F H 9 B D 9 F A G G C B C:
7 / 7 < M B F 5 1 @ 7 G @ A # 9 8 G D F C < 6 # 9 8 "

I B @ G G C H: 9 F K @ 9 C D 9 7 ð 9 8.

8 A 9 B G C B G 5 F 9 B A A
H C @ F 5 B 7 9 G
5 B: I @ 5 F: A 5 7 < ± \$ % " "
B C 8 9 7 A 5 @ D @ 5 7 9 ± \$ "
C B 9 8 9 7 A 5 @ D @ 5 7 9 ± \$ "&
H K C D @ 5 7 9 8 9 7 A 5 @ " ± \$ %
H: F 9 9 D @ 5 7 9 8 9 7 A 5 @ ± \$ \$

B H F D F 9 H: 9 C A 9 F 7
H C @ F 5 B 7 B: D 9 F.

A 5 H F 5 @

N 8 G F: 5 7 9: B G: I B @ G G
C H: 9 F I K @ 9 G F H 9 8

8 C B C H G 7 5 @ 8 F 5 K B:

	B 5 A 9	8 5 H 9
8 F 5 K B	8 F	% (# / \$ # "
7 < 9 7 ? 9 8		
9 B: 5 D D F "		
A: 5 D D F "		
E " 5 "		
7 C A A 9 B H G		



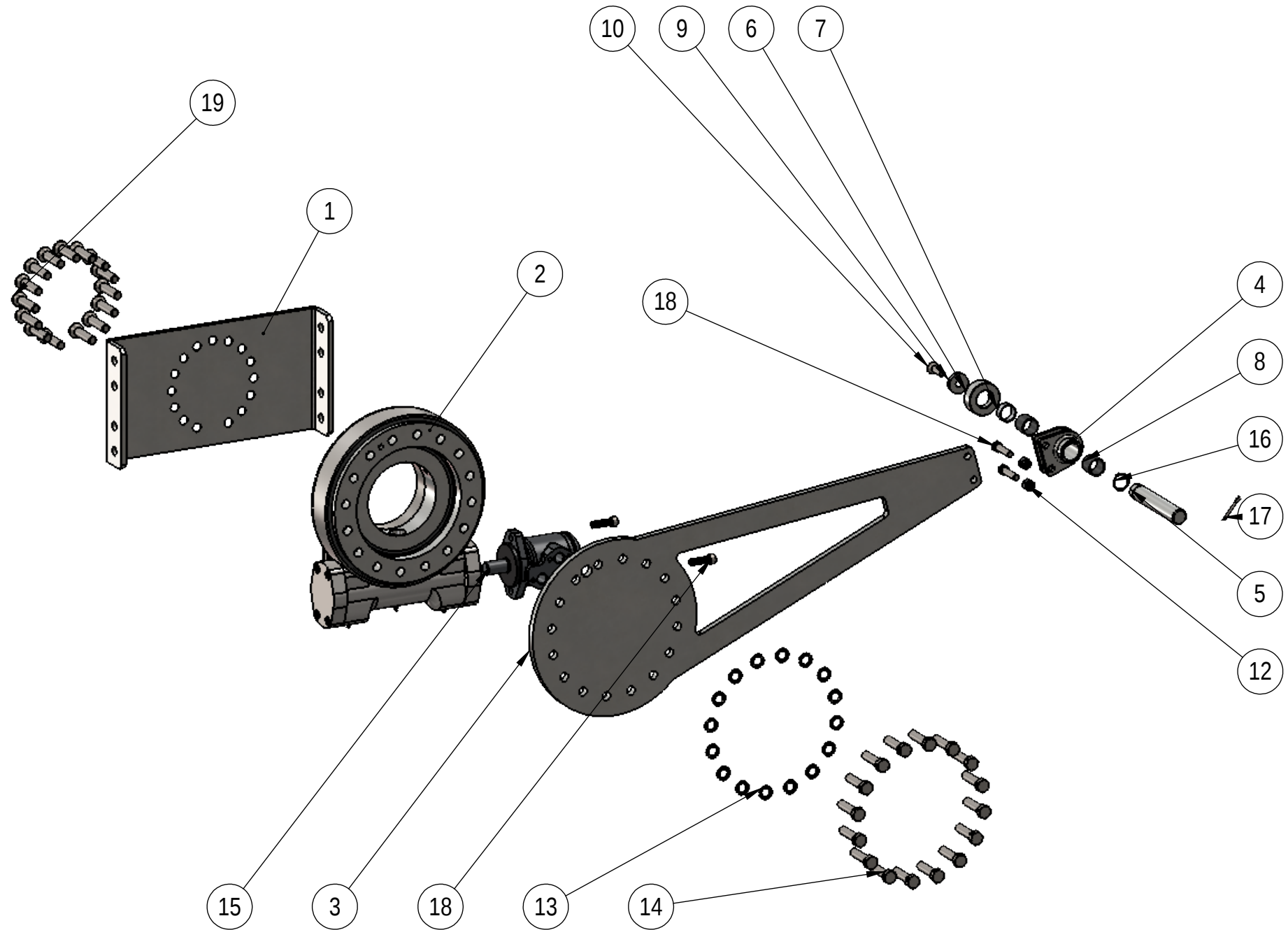
7 / 7 < M B F 5 1 @ 7 G @ B


H # @.

SDSSSLEW DRIVE SHEETING
SYSTEM (FULLY OPEN)

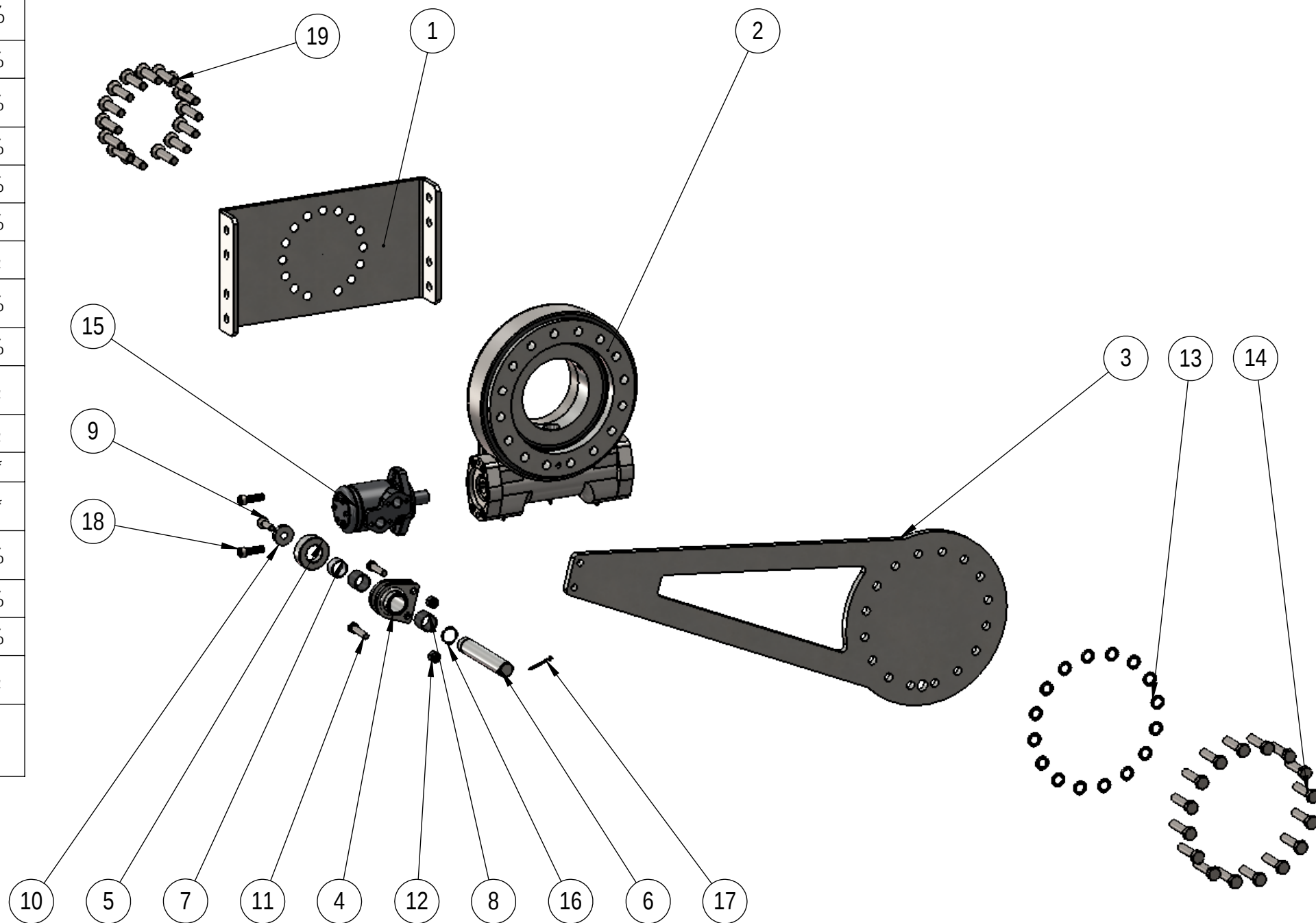
G A 9	8 K ; " " B C "	F 9 J
5		
G 7 5 @ . % (\$ K 9 ÷ < H '		G < 9 9 H) ' C : '-


#DA BC "	D5FHBI A 69F	89G7 F ðHC B	E HM
%	G8GG"G@K '8F ð 9A C I BHB; '6F57?9H		%
&	G9-5!*%&) FIF9J '7	G@K '8F ð 9	%
'	G8GG"57H 5HC F '5FA		%
(G8GG"G@8-B; 'D-B '<C I G-B; '5GGM		%
)	G8GG"FC @9F 'G<5:H		%
*	G8GG"FC @9F		%
+	; GA ' \$! ' (!%)	÷ I G'6I G<	%
,	; GA !' \$' (!' \$	÷ I G'6I G<	&
-	G8GG"FC @9F 'K 5G<9F		%
%\$	A %&'I ' (\$'7 #GI B?'GC 7?9H<958 'G7 F9K		%
%%	'A %&'I ') \$' <9L5; C B '<958 '6C @H		&
%&	A %&'B M C 7 'BI H		&
%	A %* 'GDF -B; 'K 5G<9F'		%*
%&	A %* 'I '*) '<9L5; C B '<958 '6C @H		%*
%ð	6A D', \$!&'5!8 '<M8F5I @7 'A C H C F		%
%*	A ' \$' !% \$\$'	9LH7 F7 @D	%
%+) 'I '*	G@D#HDB	%
%	A %&'I ' (\$'GC 7?9H<958 'G7 F9K		&
%-	A %* 'I '+ \$'7 #GI B?'GC 7?9H<958 'G7 F9K		%ð

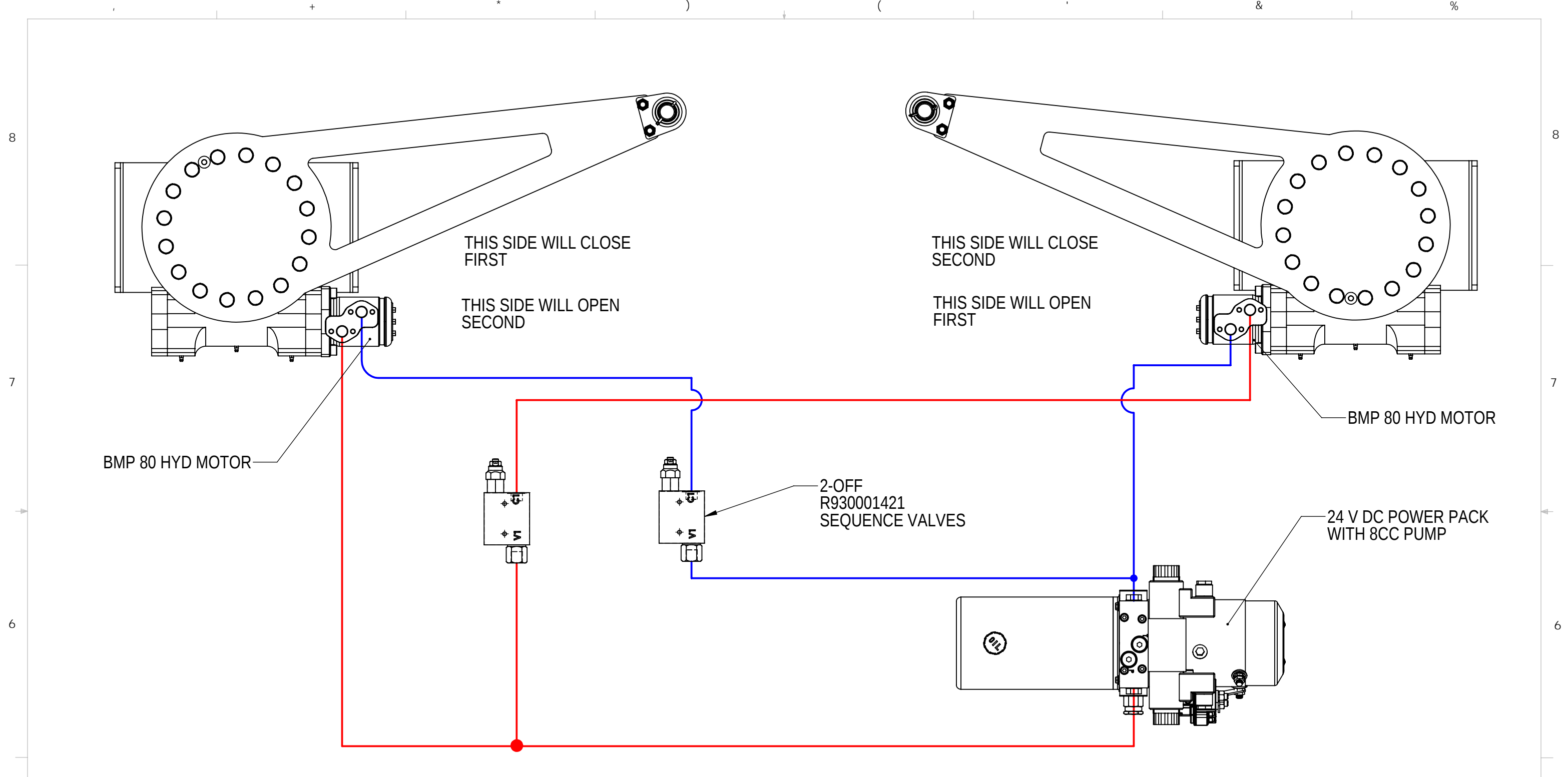


ÜÖT UXÖÄÖŠÖWÜÜ ÖPÖÄJPCÖUÄÖÖÖÜ	B5A 9	85H9	 7 / 7 '<M8F5I @7 G@B
T ÖVÖÜÖŠ	8F5K B	8F	
Y ÖÖPVA 94 *	7 <97?98	9B: '5DDF"	HH@.
ÜWÜÖÖÖÄ WÜÖP	9B: '5DDF"	A: '5DDF"	SDSS.SLEW DRIVE SHEETING SYSTEM N/SIDE ACTUATOR (EXPLODED VIEW)
DFCDF-46FM5B87CB: -89BH5@ H:9B: CFA 5HC B 7 C B H 5 B 98 -B H-6 8F5K -B: -GH:9GC @DFC D9F HMC: 7 / 7 '<M8F5I @7 G@A #98"5BM F9DFC 8I 7 HC B -B D5FHCF 5G5 K <C @ K H:C I H H:9K F H 9B D9FA -GGC B C: 7 / 7 '<M8F5I @7 G@A #98 -GDFC <-6+98"	I B @GGC H:9FK @9G H 5 H 98. 8 A 9B GC BG 5 F 9 -B A A HC @F 5 B 7 9G : F57 HC B 5 @±\$%) 5B: I @F. A 57 <±\$) *69B8 ±% HK C D@57 9 8 97 -A 5 @±\$% H:F 99 D@57 9 8 97 -A 5 @±\$%	E "5"	
8C B CHG7 5 @9 8 F5K -B;	7 C A A 9BHG	G7 5 @9. %%\$ K 9 ÷ <H' G<99H* 'C : '-	

#9A BC "	D5FHBI A 69F	8 9G7 F DHC B	E HM
%	G8GG"G@9K '8F=9'A C I BHB; '6F57?9H		%
&	G9-5!*%&)@F9J '7	G@9K '8F=9	%
'	G8GG'57H 5HCF'5FA		%
(G8GG"G@8 B; 'DB'<C I GB; '5GGM		%
)	G8GG'FC @9F		%
*	G8GG'FC @9F 'G<5:H		%
+	÷ I GS; GA S' '\$' (S&\$	÷ I G'6I G<	%
,	; GA !' '\$' (!' \$	÷ I G'6I G<	&
-	A %&'I' (\$'7 #GI B?'GC 7?9HG9HG7 F9K		%
/%\$	G8GG'FC @9F 'K 5G<9F		%
7	%% A %&'I')\$'<9L5; C B'<958'6C @H		&
%&	A %&'BM@C 7'BI H		&
%	A %*'GDF B; 'K 5G<9F'		%*
%(A %*'I' *)'<9L5; C B'<958'6C @H		%*
→ %)	6A D', \$!&'5!8'<M8F5I @7' A C H C F		%
%*	A' \$!% \$\$	9LH7 F7 @D	%
%+)'I' '*	G@D#HDB	%
%	A %&'I' (\$'GC 7?9H<958'G7 F9K		&
6	% A %*'I' +\$'7 #GI B?'GC 7?9H<958'G7 F9K		%)



ÜÖT UXÖÄSSÄWÜÜ ÖPÖÄJPCÖJÜÄÖÖÖÜ	B5A 9	85H9	 7 / 7' <M8F5I @7 G@B						
T ÖVÖÜÖS	8F5K B	8F		21/06/16					
Y ÖÖPVÄ	94	1*	SDSS.SLEW DRIVE SHEETING SYSTEM OFF/SIDE ACTUATOR (EXPLODED VIEW)						
ÜWÜÖÖÖÄ WÖÖP	N8	UNLESS OTHER- WISE STATED	<table border="1"> <tr> <td>G@9</td> <td>8K ; ""BC "</td> <td>F9J</td> </tr> <tr> <td>6</td> <td></td> <td></td> </tr> </table>	G@9	8K ; ""BC "	F9J	6		
G@9	8K ; ""BC "	F9J							
6									
DFCDF-945FM5B87CB: 89BH5@ H:9B:CFA 5HC B 7CBH5 B98 B H:G 8F5K B: 'GH:9GC @DFC D9F HMC: 7 / 7' <M8F5I @7 G@A #98"5BM F9DFC 8I 7HC B B D5FHCF 5G5 K <C @ K H:C I HH:9K F H9B D9FA GGC B C: 7 / 7' <M8F5I @7 G@A #98 'GDFC <6#98"	I B @9GC H:9K @9G5H98. 8 A 9B GC BG5F9 B A A HC @F5B7 9G : F57 HC B5 @ \$%) 5B: I @5F. A 57 <± \$%) *69B8 ±% HK C D@57 9897 A 5 @ ±\$% H:F99D@57 9897 A 5 @ ±\$%	7 C A A 9BHG E "5" 7 C A A 9BHG	G7 5 @9. %%\$ K 9 ÷ <H' G<99H+C : '-						



DFCD-45FM5B87CB: 89BH5@
 H:9B: CFA 5HC B7CBH5 B98 B H:6
 8F5K B: GH:9GC @DFCD9F HMC:
 7 / 7 <M8F51 @7G@A #98" 5BM
 F9DFC 81 7 HC B B D5FHCF 5G5 K <C @
 K H:C1 HH:9K F H9B D9FA GGC B C:
 7 / 7 <M8F51 @7G@A #98 "GDFC <6#98"

UNLESS OTHER-
 WISE STATED
 N8
 I B @GGC H:9FK @9G5H98.
 8 A 9B GC BG5F9 B A A
 HC @F5B7 9G
 : F57 HC B5 @5%
 5B: I @5F. A 57 <± \$) *69B8 ±%
 HK C D@57 9897 A 5@' ±\$%
 H:F99D@57 9897 A 5@ ±\$%\$

8F5K B	B5A 9	85H9
7 <97 ?98	8F	25/09/17
9B: '5DDF"		
A: '5DDF"		
E "5"		
7 C A A 9BHG		

SDSS.SLEW DRIVE SHEETING SYSTEM HYDRAULIC CIRCUIT (POWER PACK)

7 / 7 <M8F51 @7G@B

GA9 8K ; ""BC" F9J

6

G7 5 @9. %) \$K 9 9 <H' G<99H, 'C : '-

5

5